



IMAGE 1

General Notes:

These instructions may show a different doll design than yours, but will work for your DIY Darling doll.

Please read the instructions all the way through before starting to familiarize yourself with the process and options.

Remember if the doll is meant for children under 3 years old there should be no small parts attached that could be swallowed.

Step 1: Prepare

Cut out all pieces of the pattern carefully. A seam allowance of 3-5mm is included within the painted area. Cutting close to the printed edge will make sewing easier (Image 1). With a pencil mark a T on the back of the head back piece near the neck hair line (Image 4). For dolls with wings, if you plan to have detachable wings, follow Step 6 now.

Step 2: The Head

Pair up the ear or hair pieces, printed sides facing in. Sew around the attachment, leaving the end that joins to the head open. Clip the corners where there are curves, or trim with pinking shears. (Image 2) Turn the ears out. (Image 2)



IMAGE 2

Optional: Fold the ears in to create a nice shape (Image 3) or add a little stuffing to the hair attachment.



IMAGE 3

Sew across the bottom of attachment (Image 3). Check the placement of the ears or hair attachment (Image 3) and then reverse the placement so they are inside the head piece. Then place the back of the head over the top. (Image 4) Pin the head and attachments in place and sew around the entire outside of the head, making sure to sew the attachments within the seam. (Image 4) For long braids or ears, make sure not to catch the tips in the seam. Fold them up out of the way.

Cut a T shape in the back of the head where indicated by your T, be careful not to cut through to the face! With sharp scissors, clip in towards the stitching around the seam (Image 5), being careful not to cut your stitches. This will help keep a smooth curve. Turn the head out through the T cut and stuff firmly, particularly in the chin area. (Stuffed head shown in Image 8)

Step 3: Arms and Legs

Pair up the arm and leg pieces, printed sides in and pin them. Sew around edges leaving the top open. Clip in towards the stitches near the corners as with the head piece, especially between the bend in the thumb (Image 5). Turn the arms and stuff them about 1/2 full. Stuff the legs about 2/3rds full. Use a thin bristle brush to push the stuffing into the narrow limbs (Image 7).

Step 4: The Body - Option 1 - Sewn In Arms - Strongest for playtime

Place the arms onto the front body piece and pin into place (Image 9). Lay the back body piece over the top, printed side inwards, and pin carefully. The arms will make it a bit tricky, but if you move each edge into place and pin it will be secure for sewing.

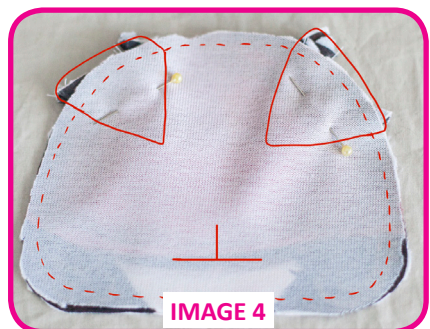


IMAGE 4



IMAGE 5



IMAGE 6



IMAGE 7

Tip:

To turn thin pieces, squeeze and roll the fabric between your fingers until it puckers then push a thin paintbrush into the gap formed between the layers of fabric. Keep pushing and rolling the fabric until it turns all the way out.





IMAGE 8

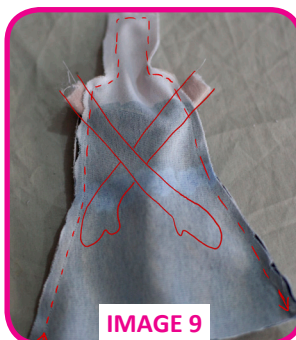


IMAGE 9



IMAGE 10



Example of External Arms



IMAGE 11



IMAGE 12



IMAGE 13

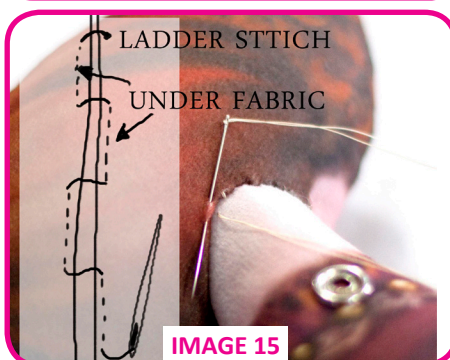


IMAGE 15

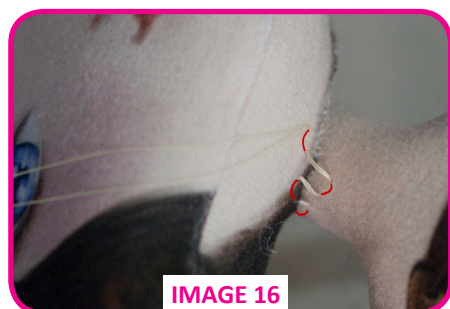


IMAGE 16

Sew around the body leaving the skirt open (Image 9). Clip in around any curves, the shoulders, and neck. Turn the body out (Image 10) and hem the skirt (Image 11). Stuff the body, particularly firmly in the neck area so it is full to the line shown in Image 13. Then push the legs up into the stuffed area and pin them in place (Image 12). Sew across the waistline (Image 13) to close in the stuffing and secure the legs.

Option 2- External Arms

Follow the instructions for Sewn In Arms, but keep the arms separate until the body is finished.

Stuff the arms a bit fuller, then fold in the hem at the tops of the arms and sew closed with a ladder stitch (ladder stitch shown in Image 14).

Swivel Arms: Using a long needle and upholstery thread, anchor a stitch to the inside of one arm and then sew through the shoulders and out the other side, then through the next arm. Sew back through again, keeping close to your first stitch. Go back and forth through the body until the arms are secure. Keeping the stitches in line will allow the arms to swivel.

Step 5: Attaching the head

Using needle and thread, anchor a stitch to the top of the neck. Push the neck up into the T cut in the back of the head and position into place, pushing the fabric flaps up into the hole for a neat edge. Wiggle it around until you are happy with the position (try it tilted to a side perhaps!). Use a hidden or ladder stitch to carefully sew around the neck line until the head is firmly attached (Image 15). Image 16 shows sewing under the neck area, the ladder stitch going in and out of the fabric. When the thread is pulled, these stitches close up so they are nearly invisible.

Step 6: Extras- Dolls with Wings

Option 1 Detachable Wings: If you want the wings to be detachable, you can use snap studs or hook-and-loop. For snap studs, just after cutting the pieces of the pattern and before sewing anything, attach your snap studs to the back of the doll and the wings. Attach the round side to the doll back and the nobbly side to the wings, so that when the wings are detached there isn't as much of a lump on the doll. A circle of hook-and-loop (hook side) attached to the wings also works, and sticks well to the doll fabric without the loop side.

Option 2 Sewn On Wings: Using a needle and a strong upholstery thread, anchor a stitch to the bottom of the wings and then sew a stitch through the doll's back, pulling the doll and wings together. Sew through the back and the wings until the wings are firmly attached.

You're all done! Hello Darling dolly! Enjoy this magical doll you made with your own hands! We'd love to see photos of your finished doll, please email them to info@fairiesandfantasy.com

Other ideas:

Why not put a rattle or bell inside while stuffing, or a crystal, heart, or other magical things? Or use some bean pellets for extra weight in the feet and hands? Embellish the outside of your doll with lace, buttons, glitter paint or even make some extra clothes!